



COMPASS SUITE

Speed, service and cost-consciousness, delivered at high quality levels, clearly influence our decisions – in private and in business. Clients expect inexpensive and innovative products, as well as simple new business and claims processes.

The Gen Re COMPASS Suite is a comprehensive and powerful tool for underwriting. It can be used in the head office but is mainly used by our clients at the point-of-sale. Users include agents, brokers, tele-interviewing or the applicant on the Internet. The COMPASS Suite consists of several components applied according to your needs:

- COMPASS Engine
- COMPASS RuleManager
- COMPASS Touch
- COMPASS TestLab
- COMPASS StaR

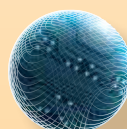
Our COMPASS Suite is based on the latest technology, including Java, JDBC database and WebServices (COMPASS Architecture).

It comes with technical and underwriting-related support by Gen Re developers, who work according to your needs. In addition to our Hotline Services, we offer workshops to enable you to start working with COMPASS quickly:

- Technical Workshop
- Underwriting Workshops



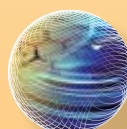
COMPASS ENGINE



COMPASS RULE MANAGER



COMPASS TOUCH



COMPASS TESTLAB



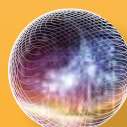
COMPASS STAR



COMPASS ARCHITECTURE



COMPASS
TECHNICAL WORKSHOPS



COMPASS
TRAINING RULE MANAGER